

# Hampshire Water Transfer and Water Recycling Project

## Environmental Statement – Figure 7.1 Archaeology and cultural heritage study areas

**VOLUME NUMBER: 6**

**PLANNING INSPECTORATE SCHEME NUMBER: WA010002**

**APPLICATION DOCUMENT REFERENCE: 6.3**

**APFP REGULATION: 5(2)(a)**

May 2026

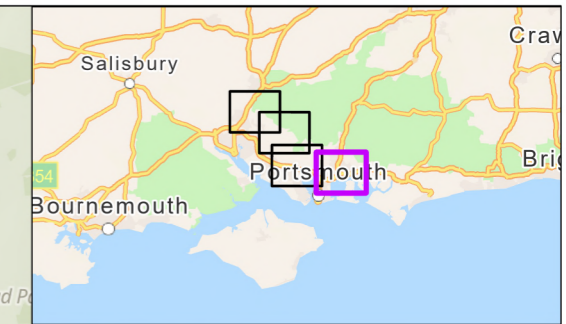
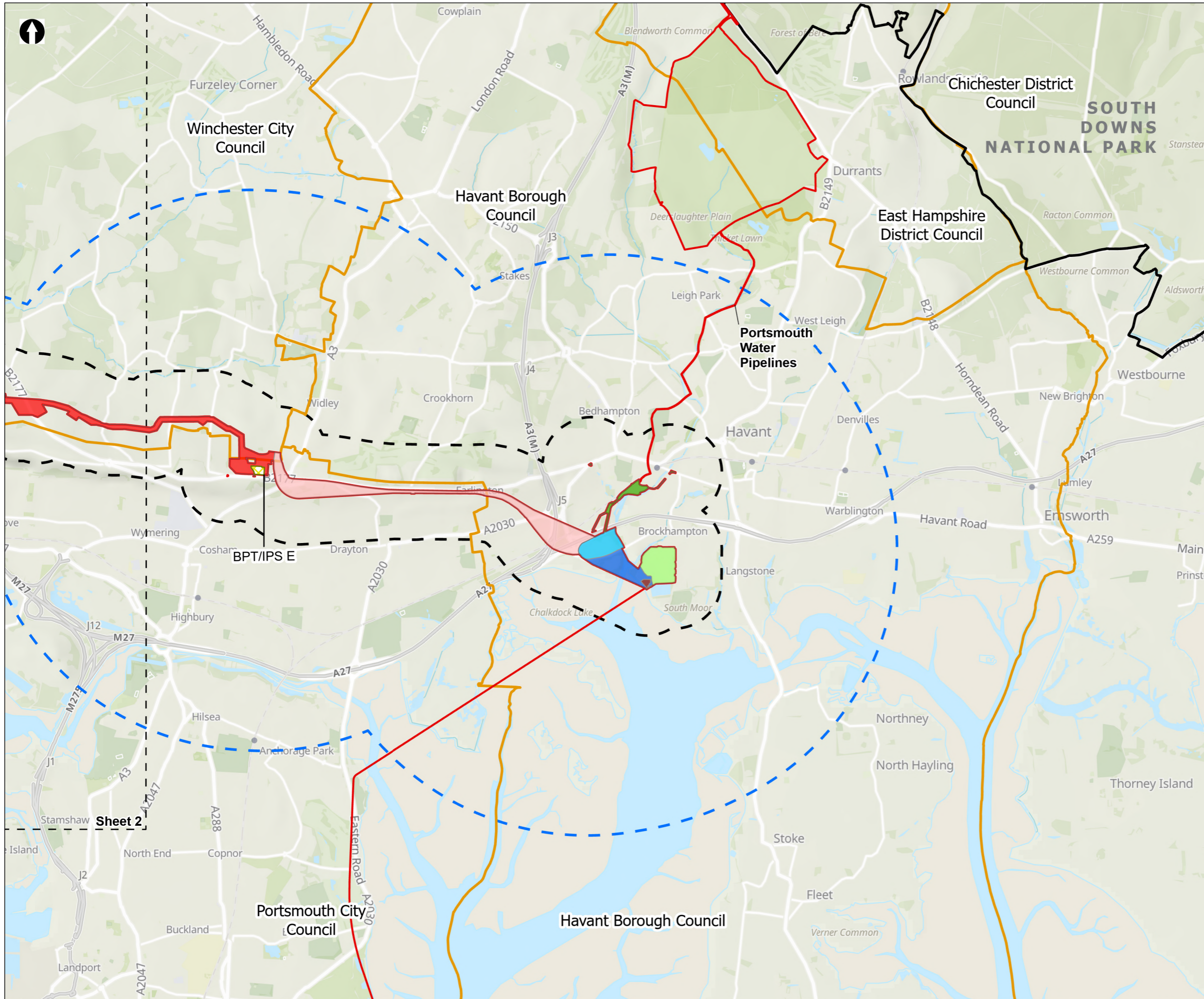
Version 0



from  
**Southern  
Water.** 

The Southern Water logo consists of three stylized, wavy blue lines of varying lengths, positioned to the right of the text 'Southern Water'.





**Order Limits**

- Order Limits
- Study Area (500m buffer)
- Extended Study Area
- Sheet Extent Boxes 1:40k
- National Parks
- Local planning authorities

**Proposed Development Components**

- Budds Farm Wastewater Treatment Works
- Limits of Deviation for Budds Farm Pumping Station
- Pipelines between the Water Recycling Plant site and Bedhampton Springs
- Water Recycling Plant site
- Pipelines between Budds Farm Wastewater Treatment Works and the Water Recycling Plant site

**Pipeline between the Water Recycling Plant site and Otterbourne Water Supply Works**

- Section D: The Water Recycling Plant site to Portsdown Hill
- Section E: Portsdown Hill to Boarhunt

**Above Ground Plant**

- Break Pressure Tank & Intermediate Pumping Station

Coordinate system: British National Grid; Datum: OSGB 1936  
 Data sources: © Crown copyright and database rights 2026 Ordnance Survey 0100031673. Sources: Esri, TomTom, Garmin, FAO, NOAA, USGS, © OpenStreetMap contributors, and the GIS User Community, Contains OS data © Crown Copyright and database right 2023 Contains data from OS Zoomstack, Contains OS data © Crown Copyright and database right 2026. Contains data from OS Zoomstack

PROJECT TITLE  
 Hampshire Water Transfer and Water Recycling Project

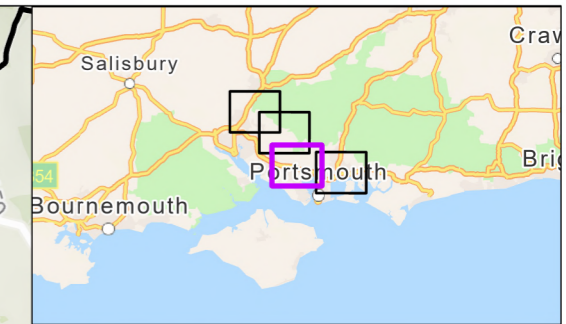
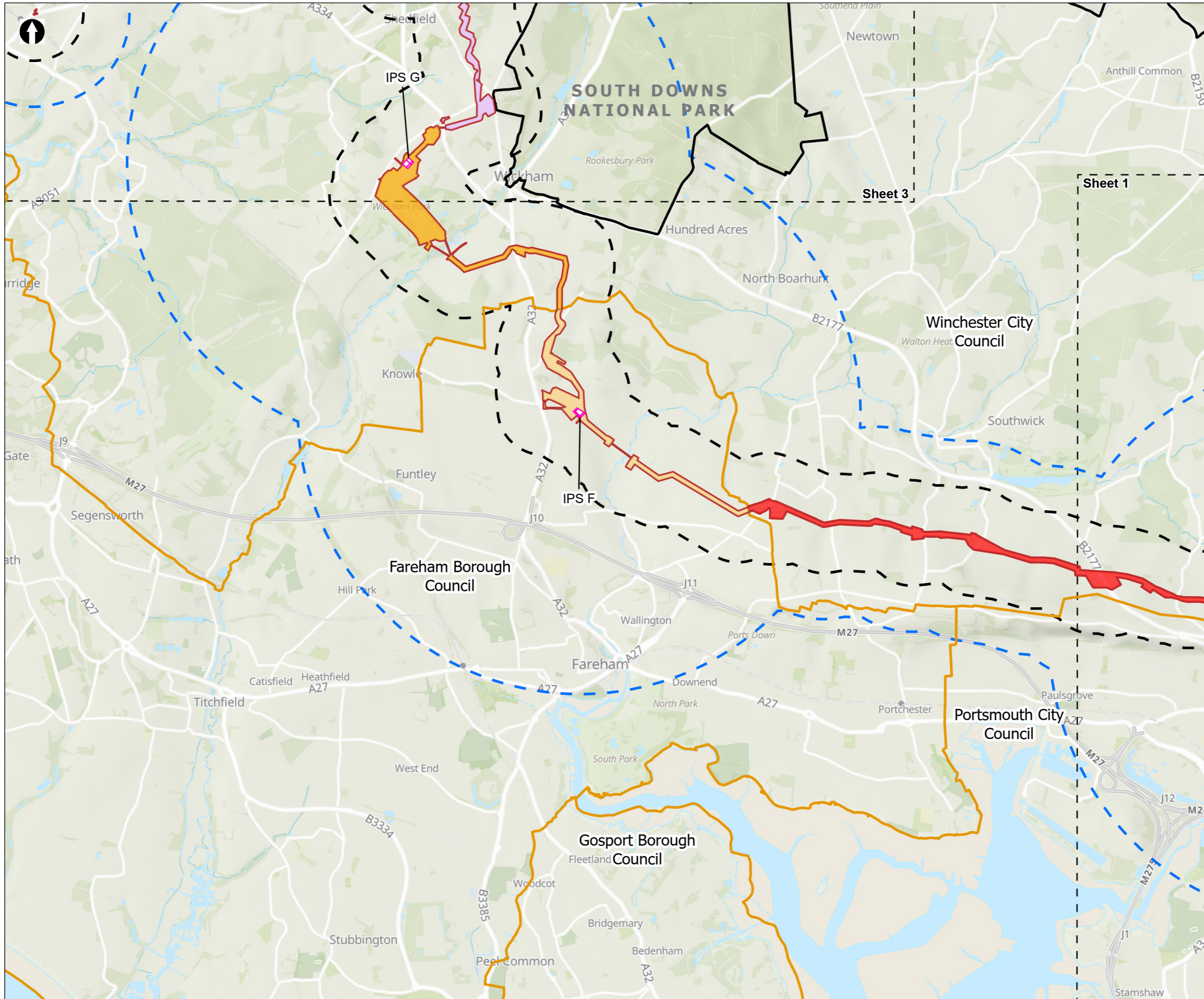


Figure 7.1  
 Archaeology and cultural heritage study areas  
 Sheet 1 of 4

Drawn <b>DL</b>	GIS Checked <b>MW</b>	Checked <b>MP</b>	Approved <b>AK</b>
Scale at A3 <b>1:40,000</b>	Status <b>Final</b>	Revision <b>05</b>	Security <b>STD</b>

Drawing Number  
**PC5223-RHD-ES-ZZ-D-Z-0114**





**Order Limits**

- Study Area (500m buffer)
- Extended Study Area
- Sheet Extent Boxes 1:40k
- National Parks
- Local planning authorities

**Pipeline between the Water Recycling Plant site and Otterbourne Water Supply Works**

- Section E: Portsdown Hill to Boarhunt
- Section F: Boarhunt to Crockerhill
- Section G: Crockerhill to Wickham
- Section H: Wickham to Shedfield
- Section J: Shedfield to the River Hamble

**Above Ground Plant**

- Intermediate Pumping Station

Coordinate system: British National Grid; Datum: OSGB 1936  
 Data sources: © Crown copyright and database rights 2026 Ordnance Survey 0100031673. Sources: Esri, TomTom, Garmin, FAO, NOAA, USGS, © OpenStreetMap contributors, and the GIS User Community, Contains OS data © Crown Copyright and database right 2023 Contains data from OS Zoomstack, Contains OS data © Crown Copyright and database right 2026. Contains data from OS Zoomstack

PROJECT TITLE  
 Hampshire Water Transfer and Water Recycling Project



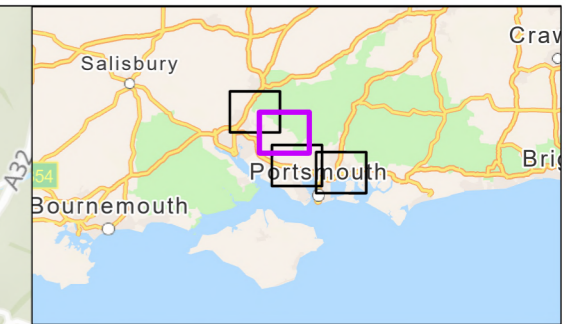
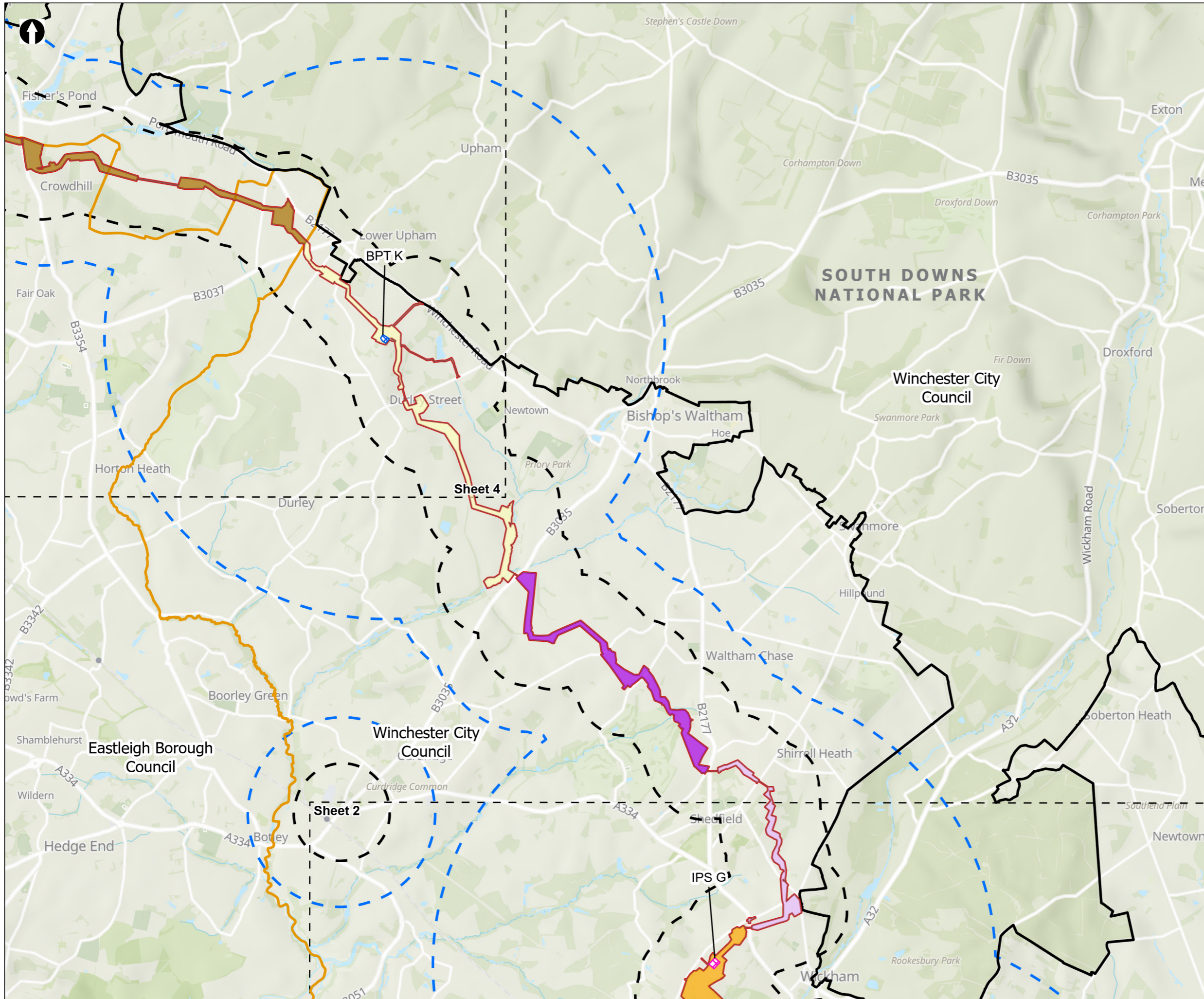
Figure 7.1  
 Archaeology and cultural heritage study areas  
 Sheet 2 of 4

Drawn DL	GIS Checked MW	Checked MP	Approved AK
Scale at A3 1:40,000	Status Final	Revision 05	Security STD

© Southern Water 2026  
 This document is issued for the party which commissioned it and for specific purposes connected with the captioned project only. It should not be relied upon by any other party or used for any other purpose.  
 We accept no responsibility for the consequences of this document being relied upon by any other party, or being used for any other purpose, or containing any error or omission which is due to an error or omission in data supplied to us by other parties.



Drawing Number  
 PC5223-RHD-ES-ZZ-D-Z-0114



**Order Limits**

- Study Area (500m buffer)
- Extended Study Area
- Sheet Extent Boxes 1:40k
- National Parks
- Local planning authorities

**Pipeline between the Water Recycling Plant site and Otterbourne Water Supply Works**

- Section G: Crockerhill to Wickham
- Section H: Wickham to Shedfield
- Section J: Shedfield to the River Hamble
- Section K: The River Hamble to Lower Upham
- Section L: Lower Upham to Brambridge

**Above Ground Plant**

- Break Pressure Tank
- Intermediate Pumping Station

Coordinate system: British National Grid; Datum: OSGB 1936  
 Data sources: © Crown copyright and database rights 2026 Ordnance Survey 0100031673. Sources: Esri, TomTom, Garmin, FAO, NOAA, USGS, © OpenStreetMap contributors, and the GIS User Community, Contains OS data © Crown Copyright and database right 2023. Contains data from OS Zoomstack, Contains OS data © Crown Copyright and database right 2026. Contains data from OS Zoomstack

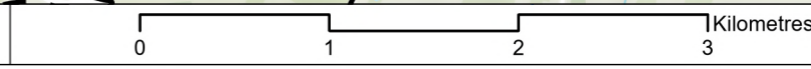
PROJECT TITLE  
 Hampshire Water Transfer and Water Recycling Project

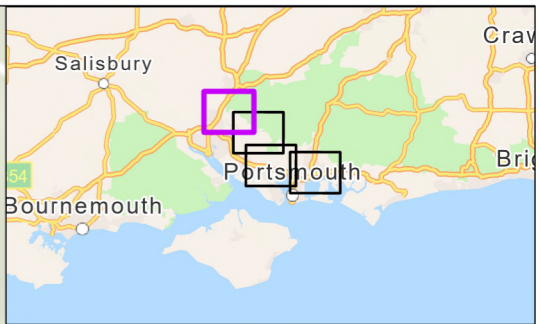
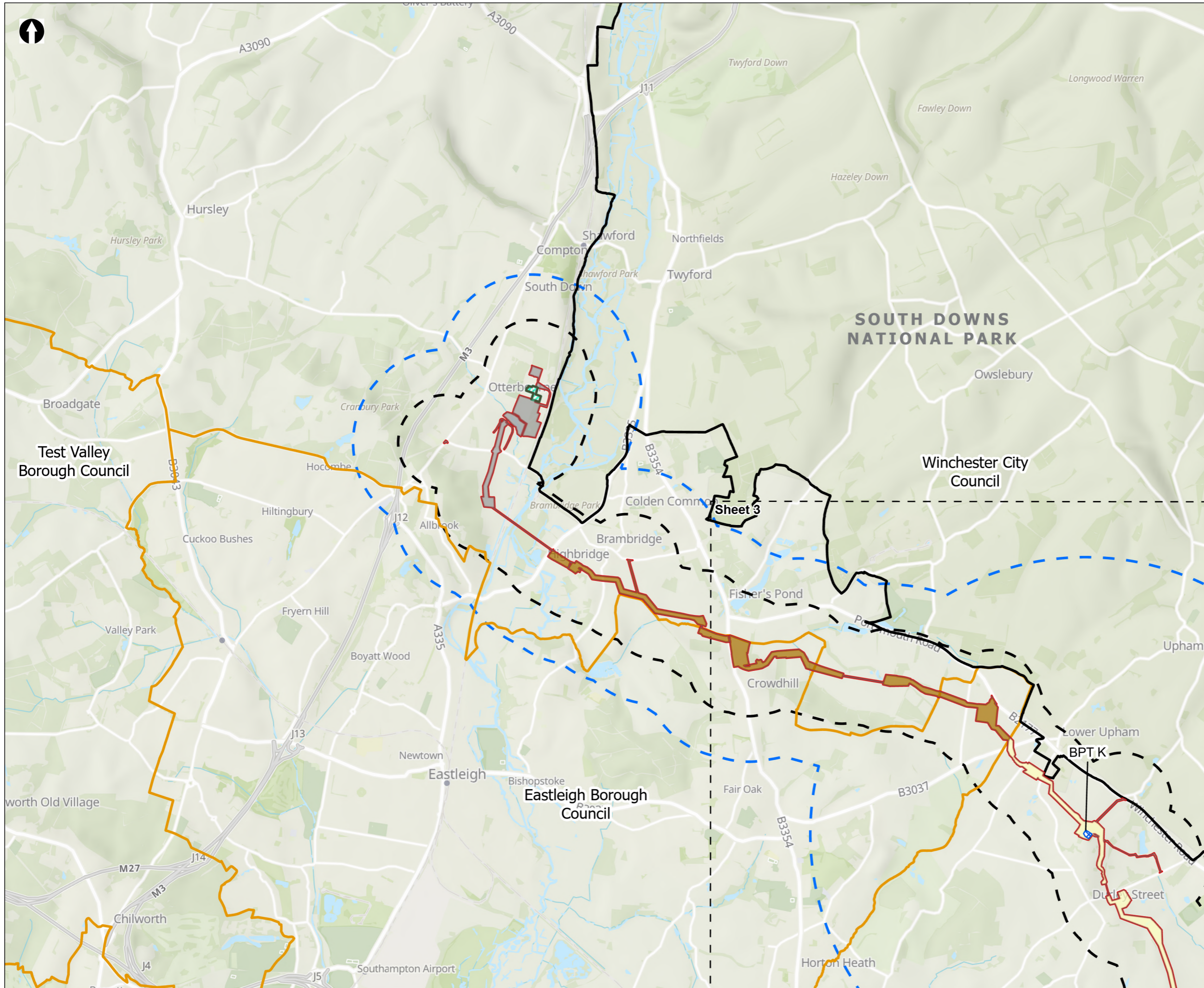


Figure 7.1  
 Archaeology and cultural heritage study areas  
 Sheet 3 of 4

Drawn <b>DL</b>	GIS Checked <b>MW</b>	Checked <b>MP</b>	Approved <b>AK</b>
Scale at A3 <b>1:40,000</b>	Status <b>Final</b>	Revision <b>05</b>	Security <b>STD</b>

Drawing Number  
**PC5223-RHD-ES-ZZ-D-Z-0114**





- Order Limits
  - Study Area (500m buffer)
  - Extended Study Area
  - Sheet Extent Boxes 1:40k
  - National Parks
  - Local planning authorities
- Pipeline between the Water Recycling Plant site and Otterbourne Water Supply Works**
- Section K: The River Hamble to Lower Upham
  - Section L: Lower Upham to Brambridge
  - Section M: Brambridge to Otterbourne Water Supply Works
- Limits of Deviation for Otterbourne INNS Treatment Plant**
- Limits of Deviation for Otterbourne INNS Treatment Plant
- Above Ground Plant**
- Break Pressure Tank

Coordinate system: British National Grid; Datum: OSGB 1936  
 Data sources: © Crown copyright and database rights 2026 Ordnance Survey 0100031673. Sources: Esri, TomTom, Garmin, FAO, NOAA, USGS, © OpenStreetMap contributors, and the GIS User Community, Contains OS data © Crown Copyright and database right 2023. Contains data from OS Zoomstack, Contains OS data © Crown Copyright and database right 2026. Contains data from OS Zoomstack

PROJECT TITLE  
 Hampshire Water Transfer and Water Recycling Project



Figure 7.1  
 Archaeology and cultural heritage study areas  
 Sheet 4 of 4

Drawn <b>DL</b>	GIS Checked <b>MW</b>	Checked <b>MP</b>	Approved <b>AK</b>
Scale at A3 <b>1:40,000</b>	Status <b>Final</b>	Revision <b>05</b>	Security <b>STD</b>

Drawing Number  
**PC5223-RHD-ES-ZZ-D-Z-0114**

© Southern Water 2026  
 This document is issued for the party which commissioned it and for specific purposes connected with the captioned project only. It should not be relied upon by any other party or used for any other purpose. We accept no responsibility for the consequences of this document being relied upon by any other party, or being used for any other purpose, or containing any error or omission which is due to an error or omission in data supplied to us by other parties.

